

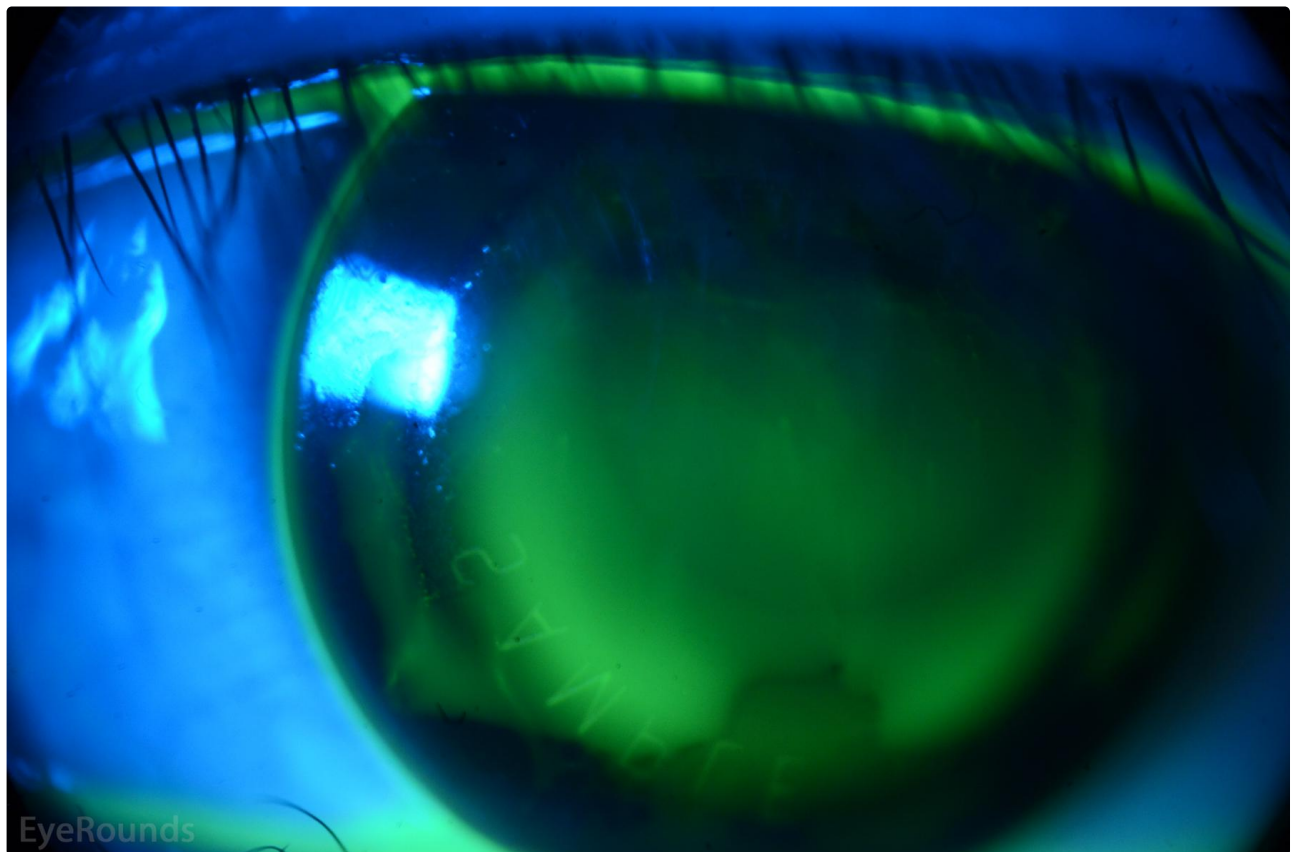
Orthokeratology

Category(ies): [Contact Lens](#)

Contributor: [Tressa Larson OD FAAO](#)



Orthokeratology is known variously as corneal molding, corneal reshaping therapy, vision shaping therapy and other monikers. In orthokeratology, typically a myopic eye is fitted with an rigid gas permeable lens that is very flat centrally, but has a reverse curve (steeper than the base curve) in the mid periphery. The lens then flattens and rearranges the corneal epithelium such that the shape of the anterior cornea changes from prolate to oblate. This results in a temporary reduction or elimination of myopic refraction. Users must wear the lenses for about eight hours at least every 2-3 nights to maintain the shape. The fit seen here is ideal: there is slight pooling in the area outside of the visual axis compared to the center and there is seal off adjacent to the periphery.



EyeRounds

 [Enlarge](#)

 [Download](#)

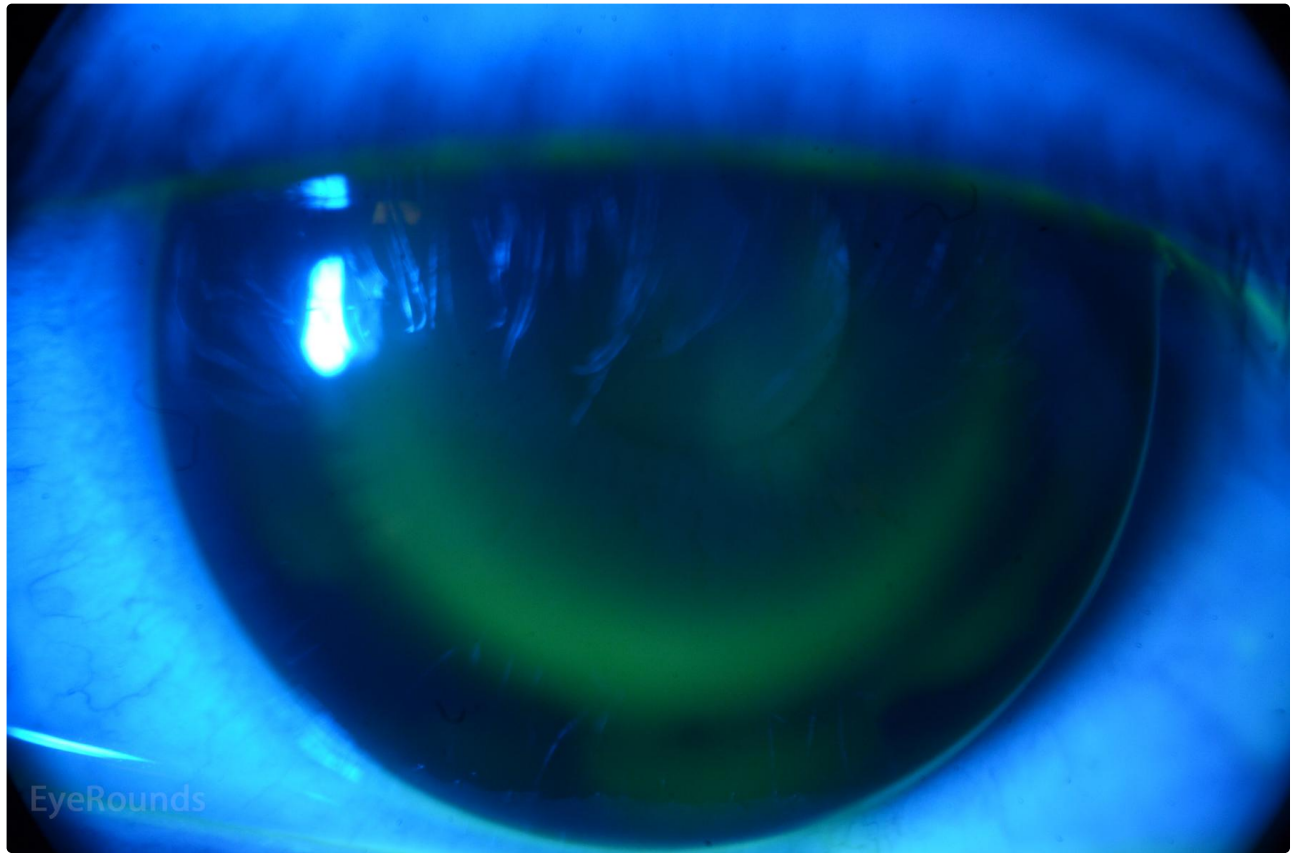
[Enlarge](#)[Download](#)

Image Permissions:



Ophthalmic Atlas Images by [EyeRounds.org](#), [The University of Iowa](#) are licensed under a [Creative Commons Attribution-NonCommercial-NoDerivs 3.0 Unported License](#).

Address

University of Iowa
Roy J. and Lucille A. Carver College
of Medicine
Department of Ophthalmology and
Visual Sciences
200 Hawkins Drive
Iowa City, IA 52242

Legal

Copyright © 2019 The University of
Iowa. All Rights Reserved
Report an issue with this page
[Web Privacy Policy](#) |
[Nondiscrimination Statement](#)

Related Links

[Cataract Surgery for Greenhorns](#)
[EyeTransillumination](#)
[Gonioscopy.org](#)
[Iowa Glaucoma Curriculum](#)
[Iowa Wet Lab](#)
[Patient Information](#)
[Stone Rounds](#)

EyeRounds Social Media

Follow



Receive notification of new cases,
sign up here
[Contact Us](#)

